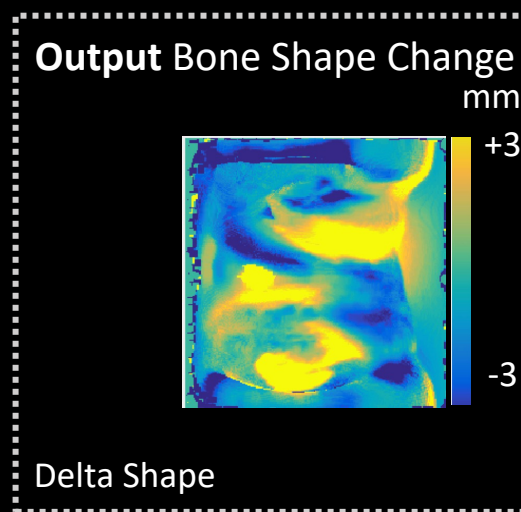
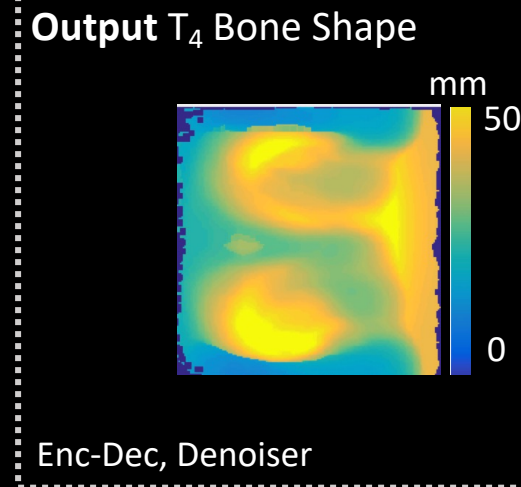
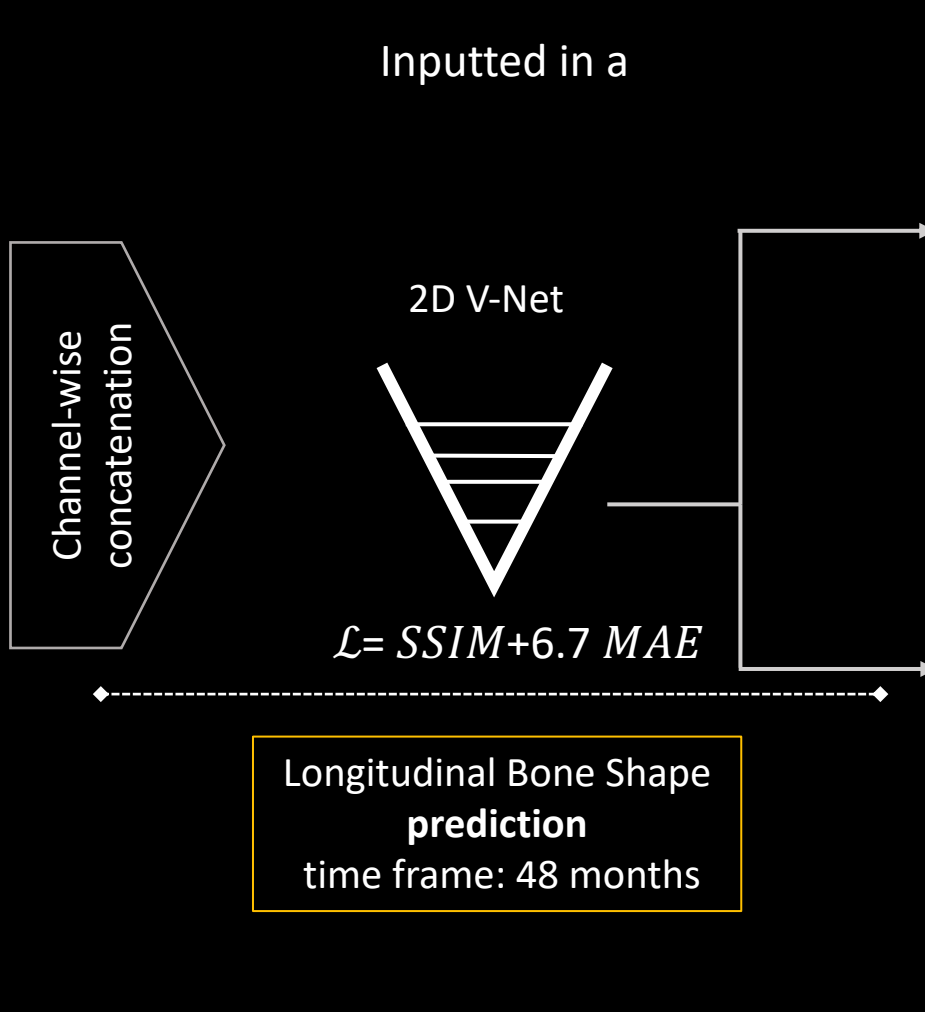
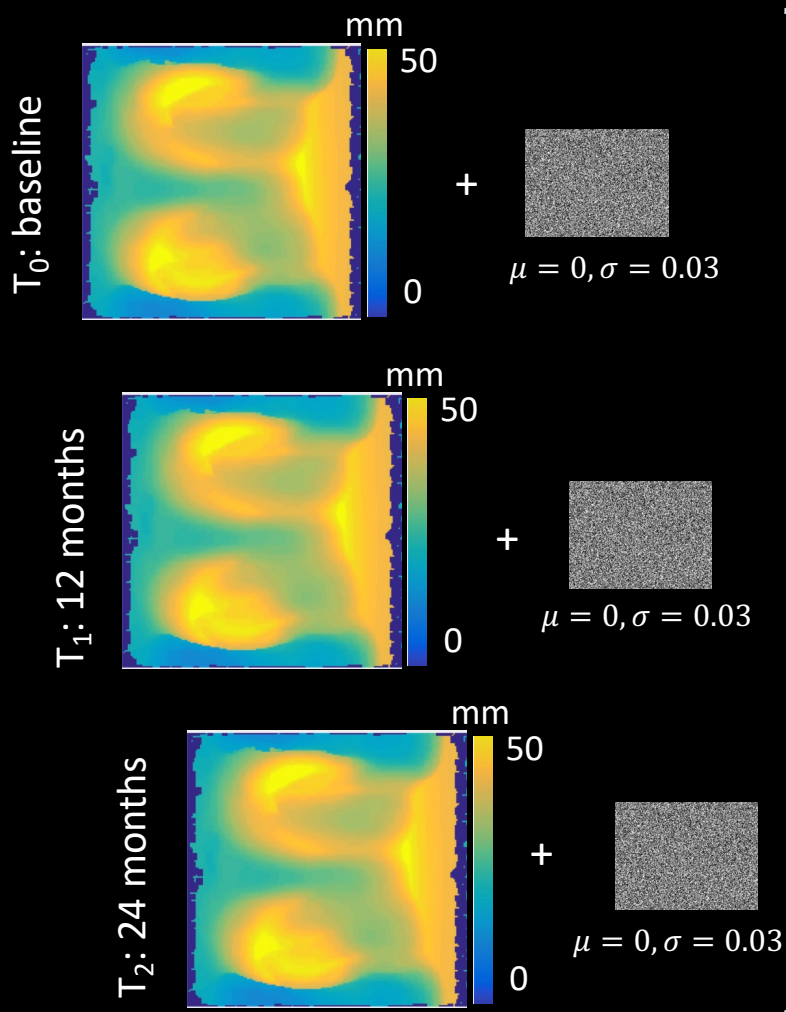
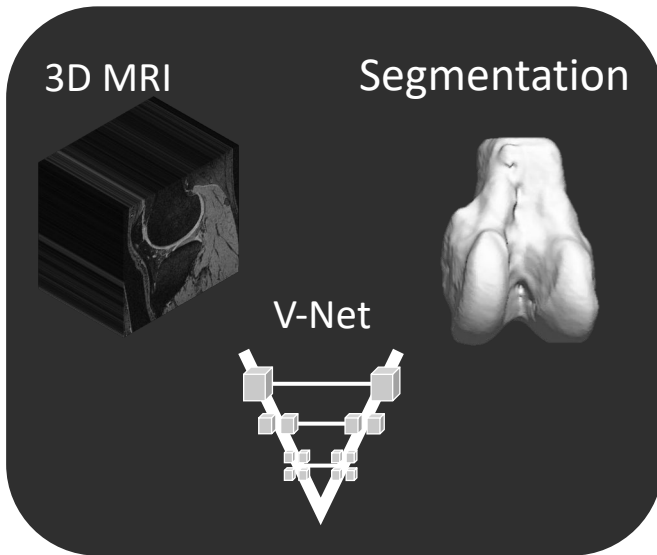


Given spherical map computed at 3 consecutive time points

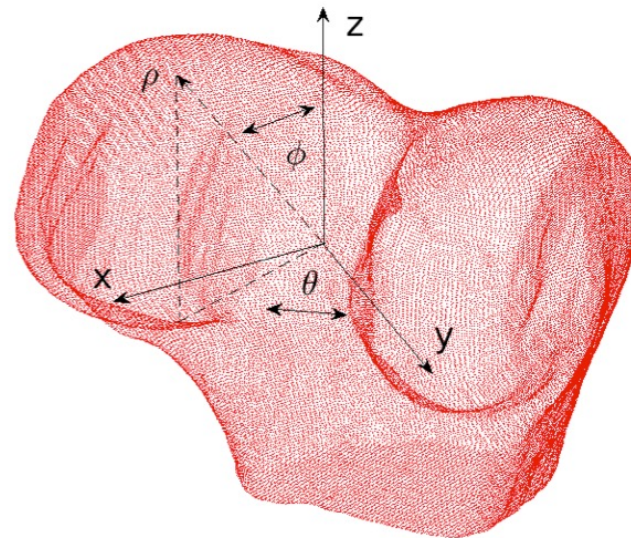
To predict



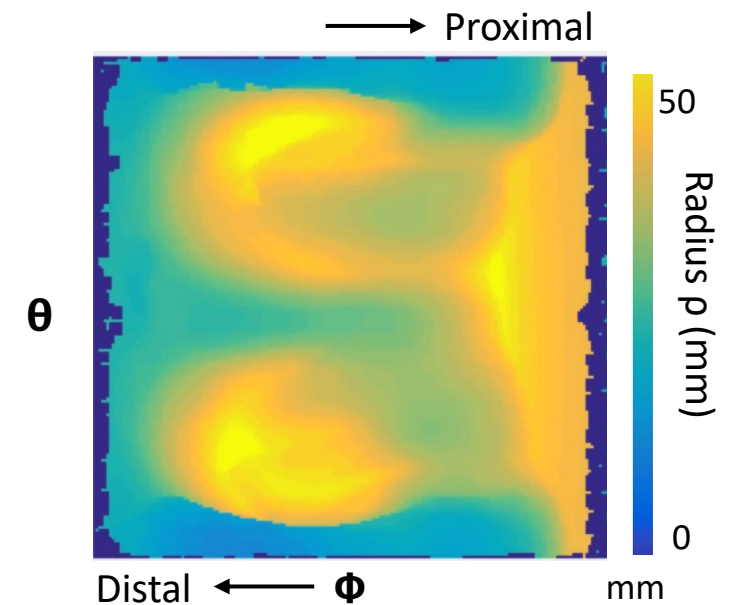
Bone Segmentation



3D Bone Mesh & Registration

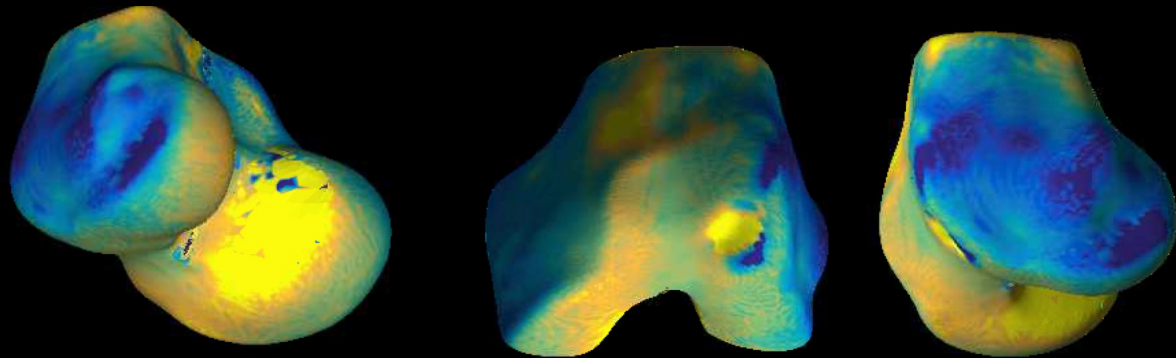
Spherical
Encoding

Bone Surface Spherical Encoding

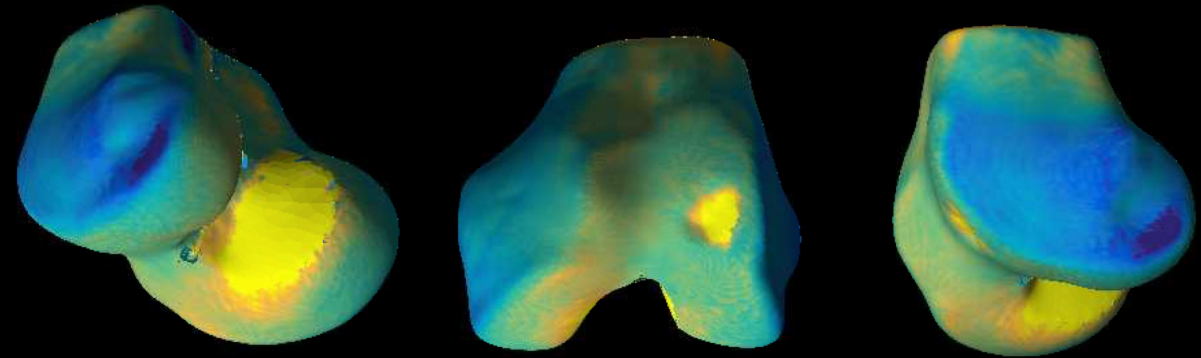


DL models can capture and predict trajectory of local changes in bone surface shape over time

Prediction Longitudinal Bone Shape Differences



Target Longitudinal Bone Shape Differences



-2  2 [mm]