

Morphology-based losses for mammograms segmentation

Short paper H8 @ MIDL 2021

based on "*Looking for abnormalities in mammograms with self-and weakly supervised reconstruction*", IEEE TMI 2021

live: Thursday 8th, 16:45 - 17:30 (UCT+2)

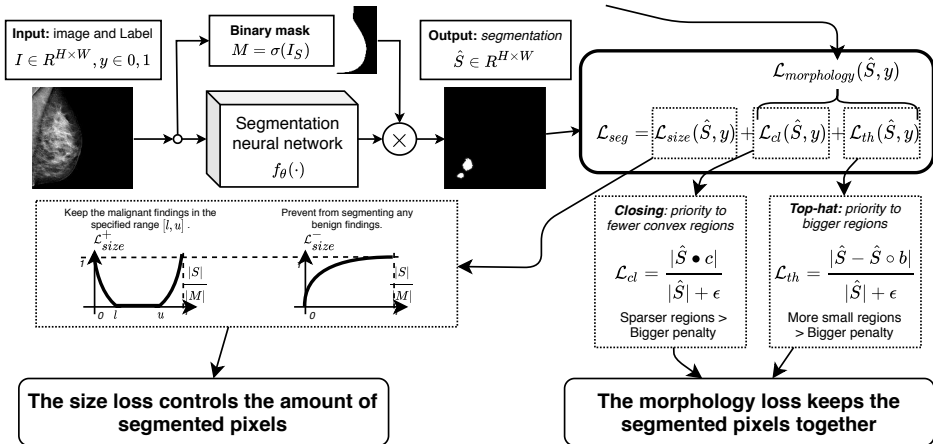
Mickael Tardy (mickael.tardy@ec-nantes.fr)^{1,2} Diana Mateus,¹

¹Ecole Centrale de Nantes, LS2N, UMR CNRS 6004, Nantes, France

²Hera-MI, SAS

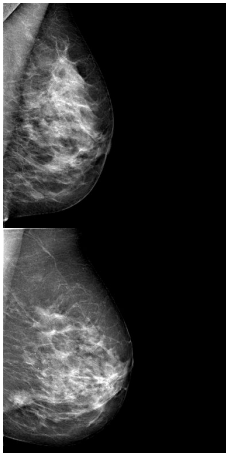


Optimizing the segmentation output with the losses based on morphology operations

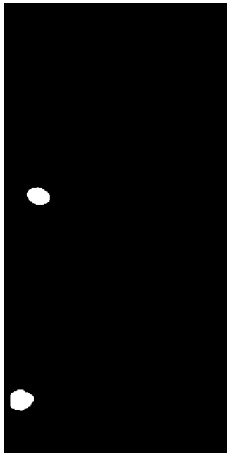


Results

Input image



Ground truth



Size-loss only



Size + morphology

